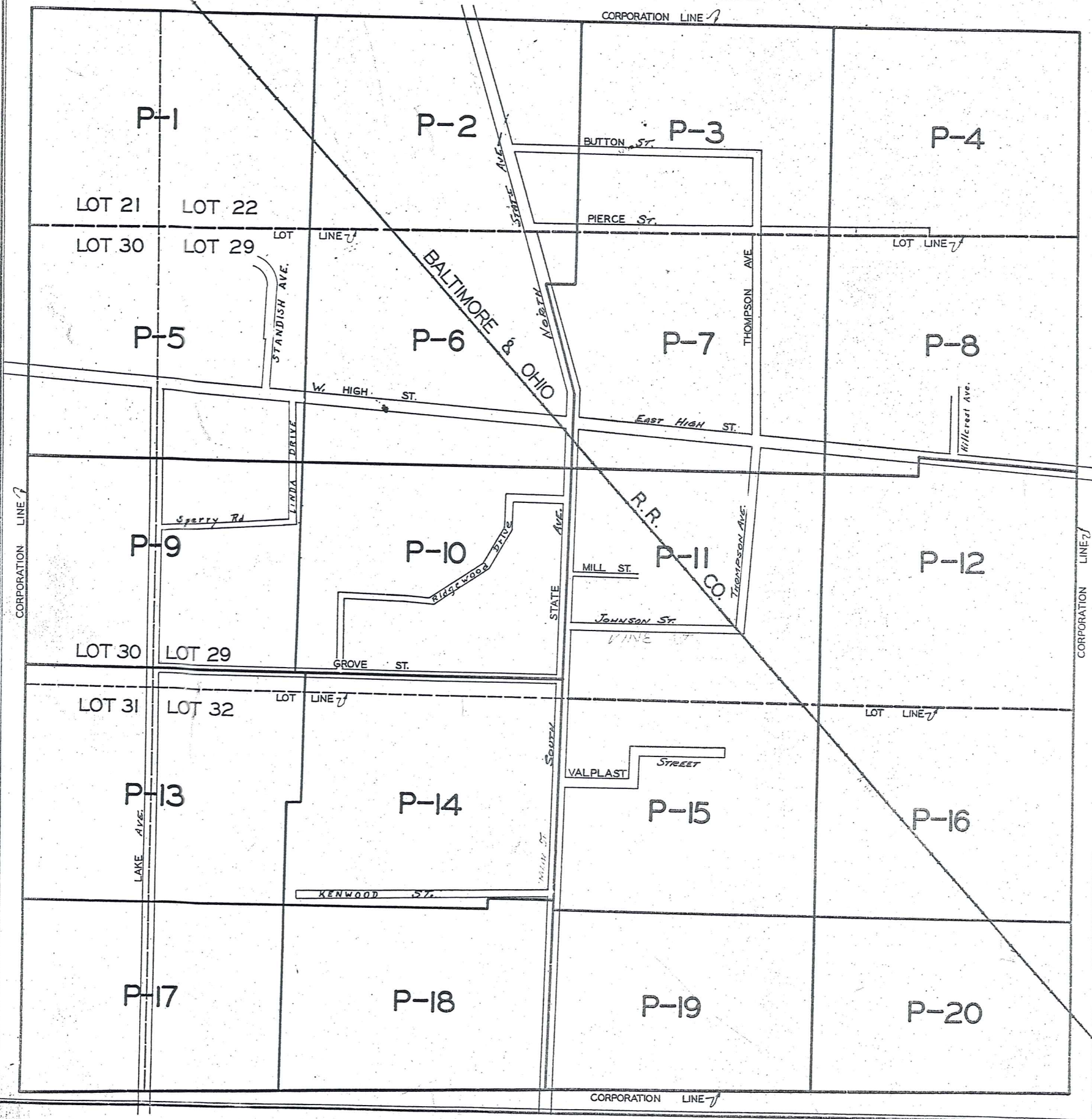


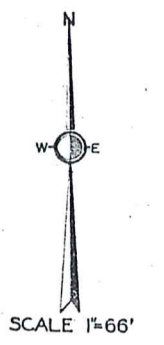
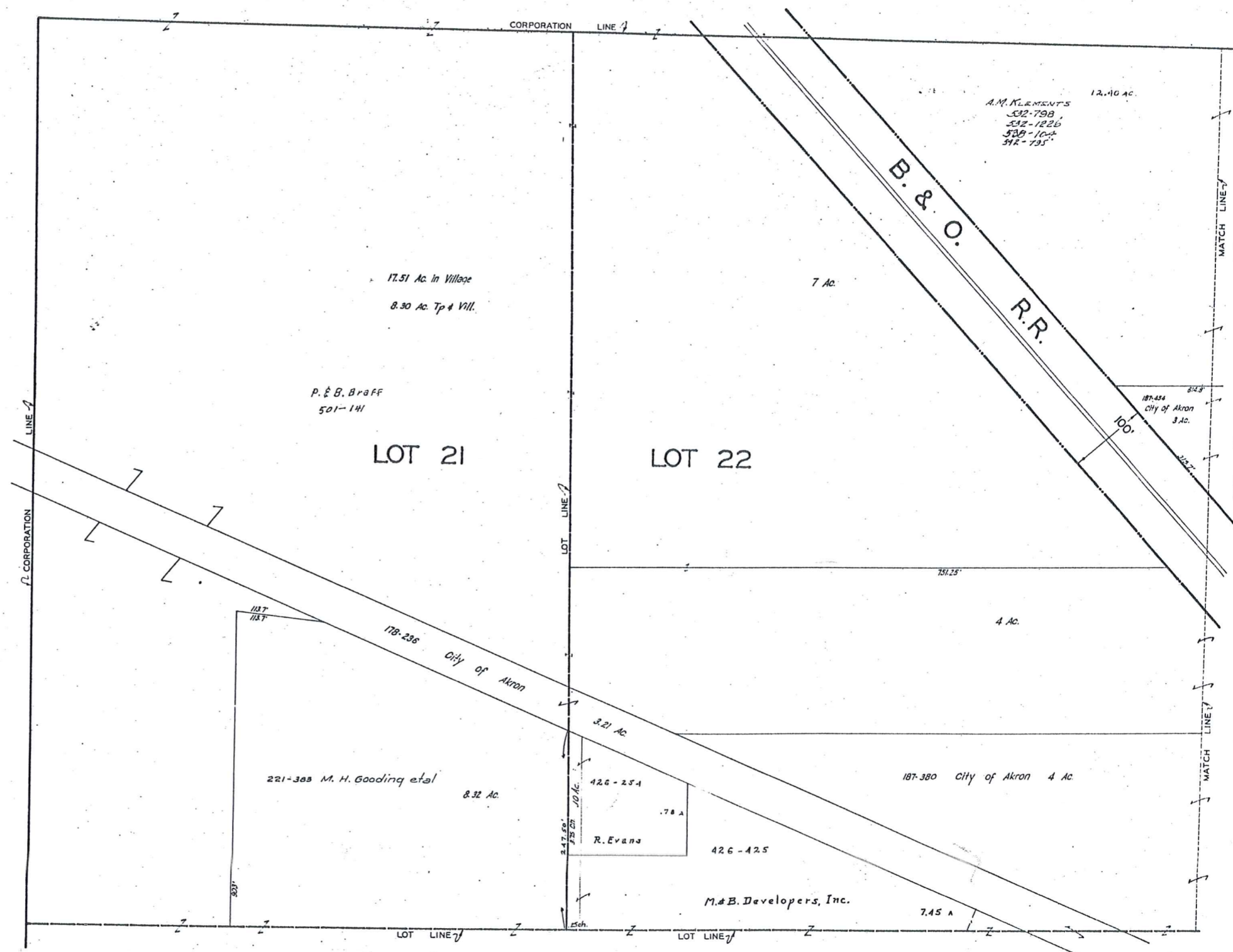
# INDEX MAP OF MIDDLEFIELD VILL.

SCALE 1"=330'

W O E



MIDDLEFIELD VILLAGE



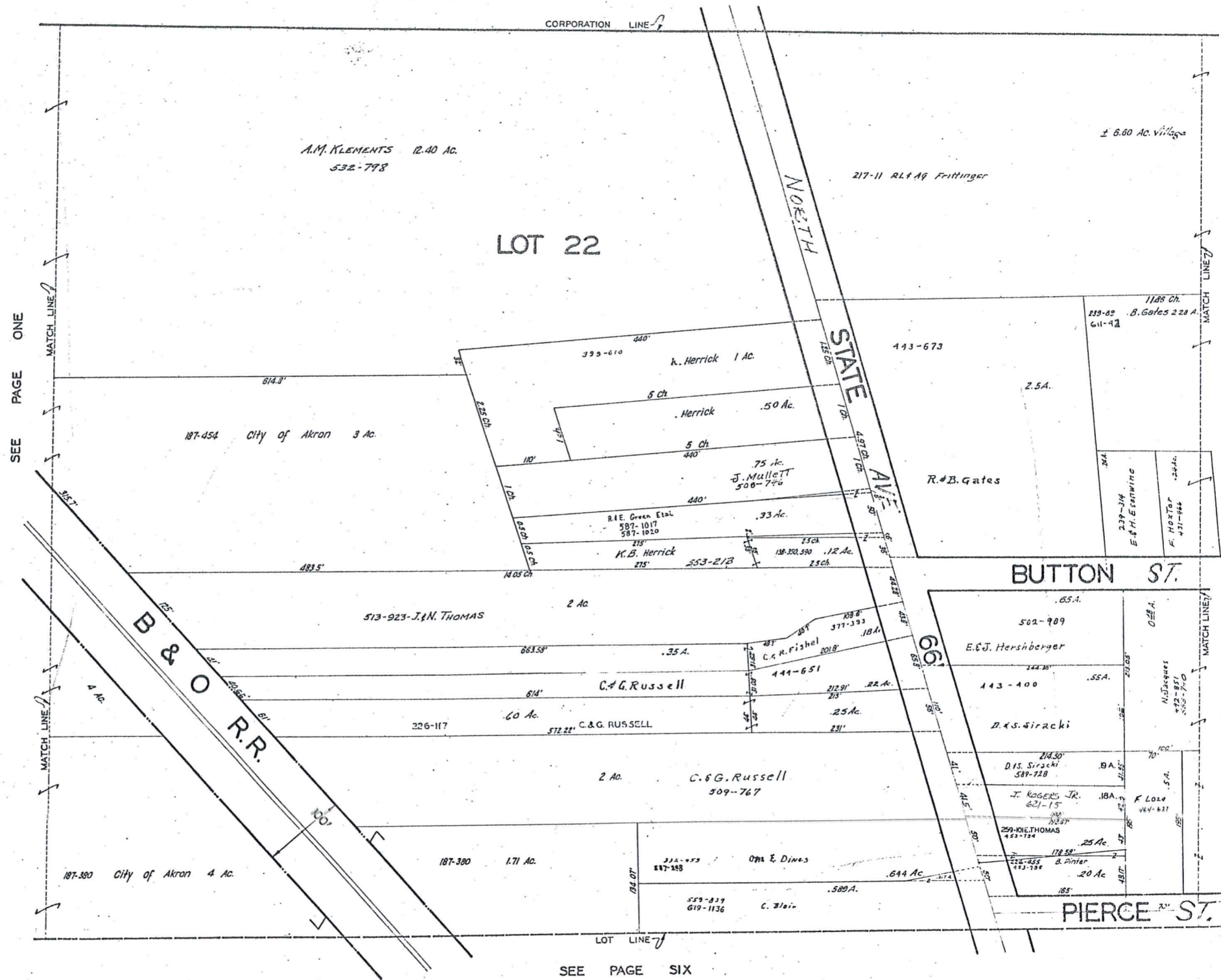
JAN. 1, 1973

SEE PAGE TWO

SEE PAGE FIVE

271

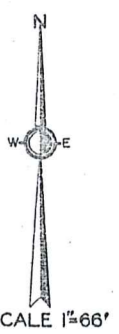
MIDDLEFIELD VILLAGE



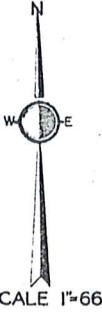
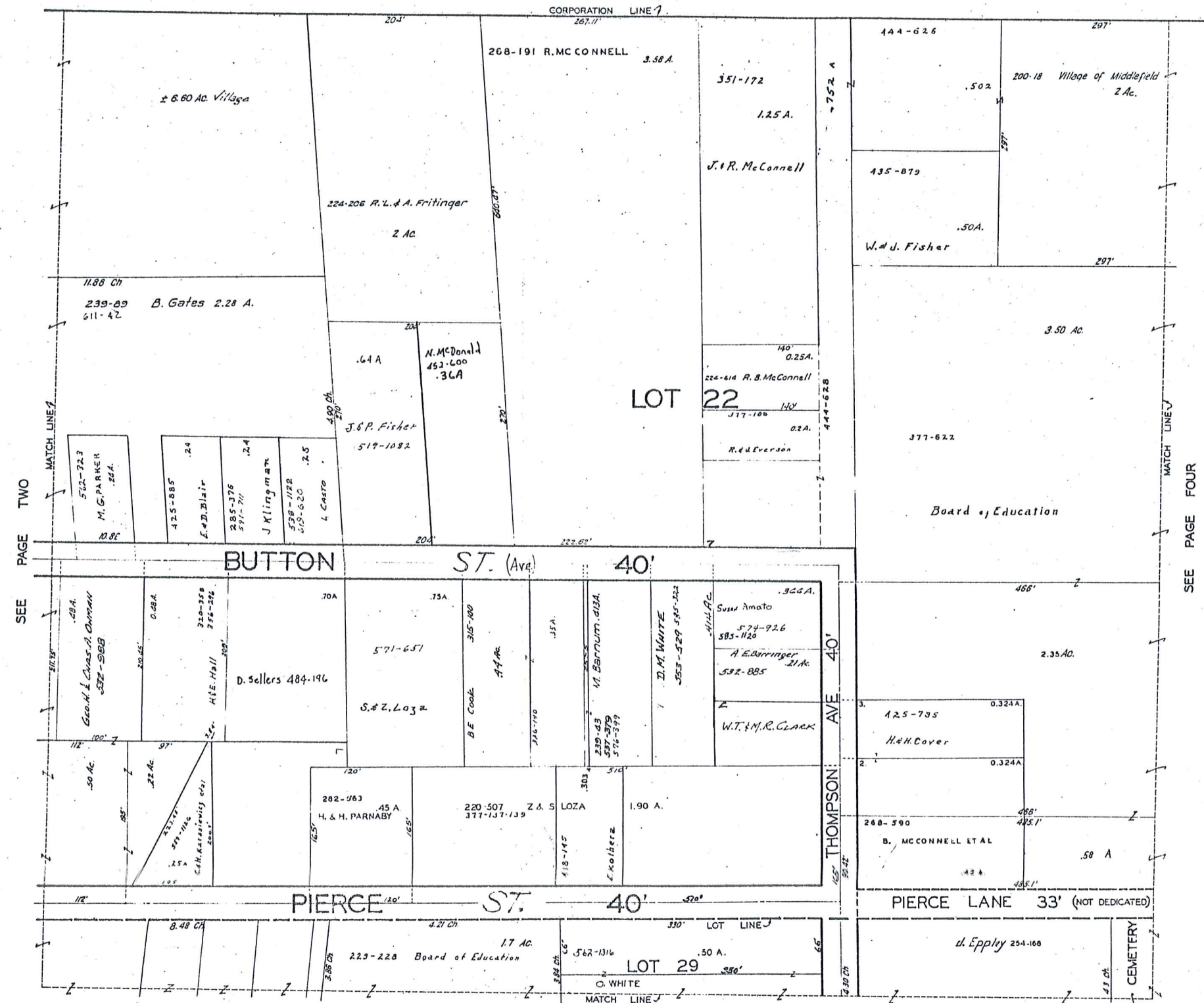
SEE PAGE ONE

SEE PAGE THREE

SEE PAGE SIX



JAN 1, 1978



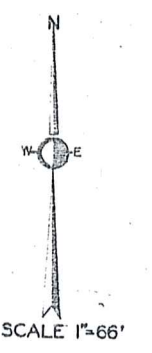
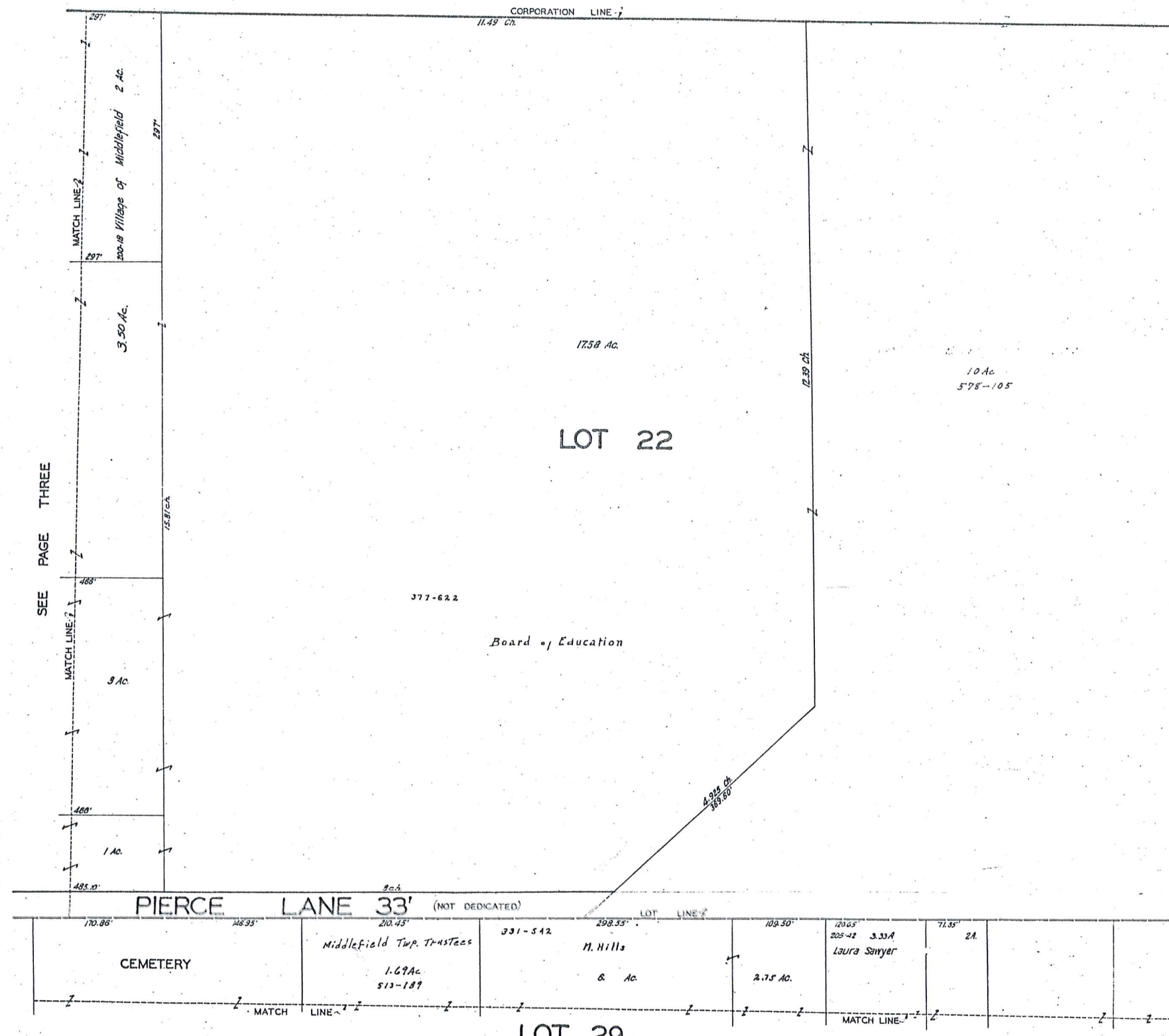
JAN 1, 1978

SEE PAGE TWO

SEE PAGE FOUR

SEE PAGE SEVEN

273



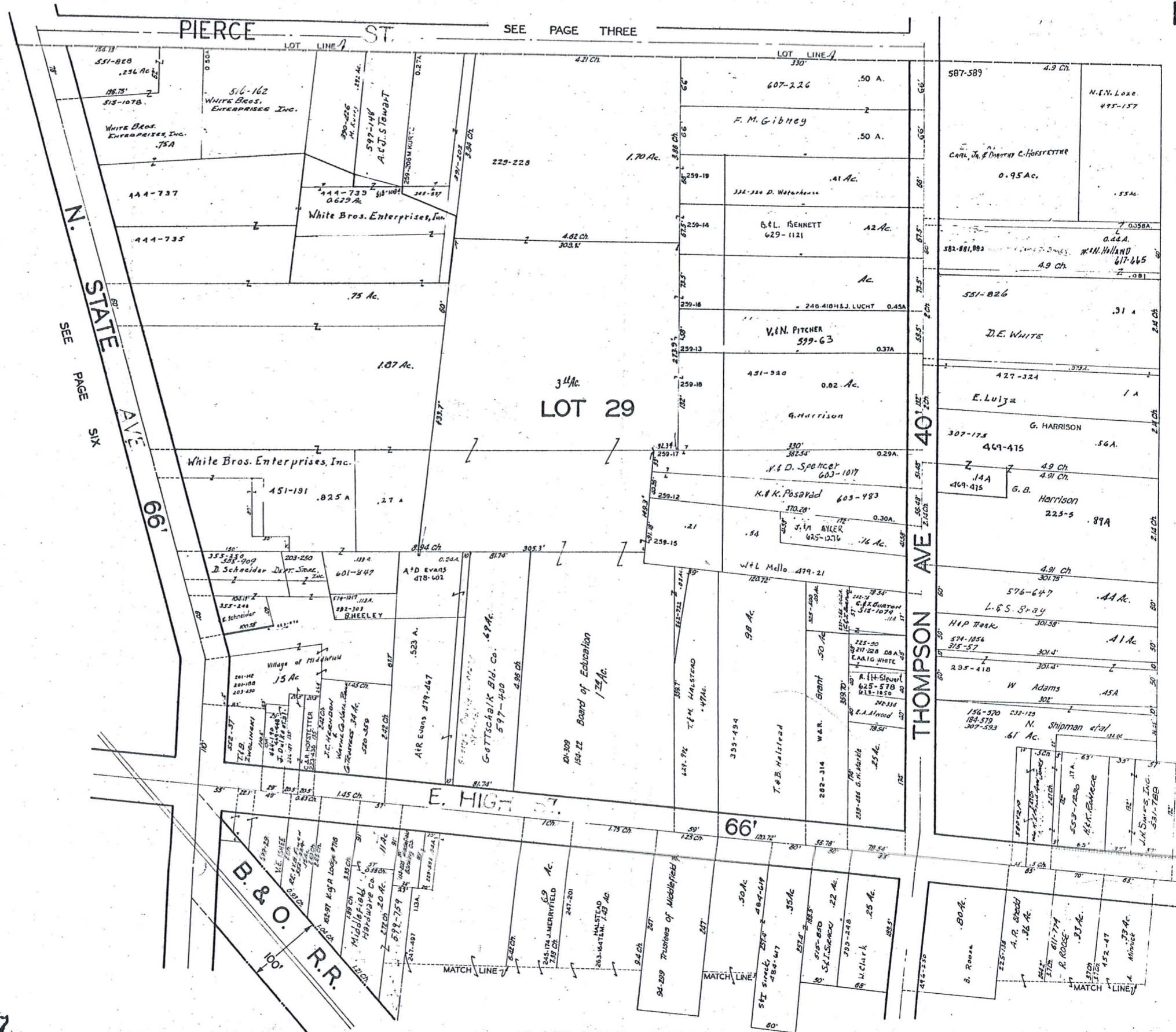
JAN .1, 1978

SEE PAGE EIGHT





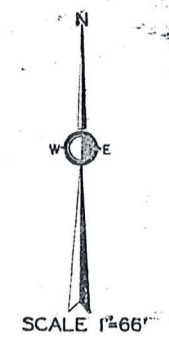
MIDDLEFIELD VILLAGE



SEE PAGE SIX

SEE PAGE THREE

SEE PAGE EIGHT



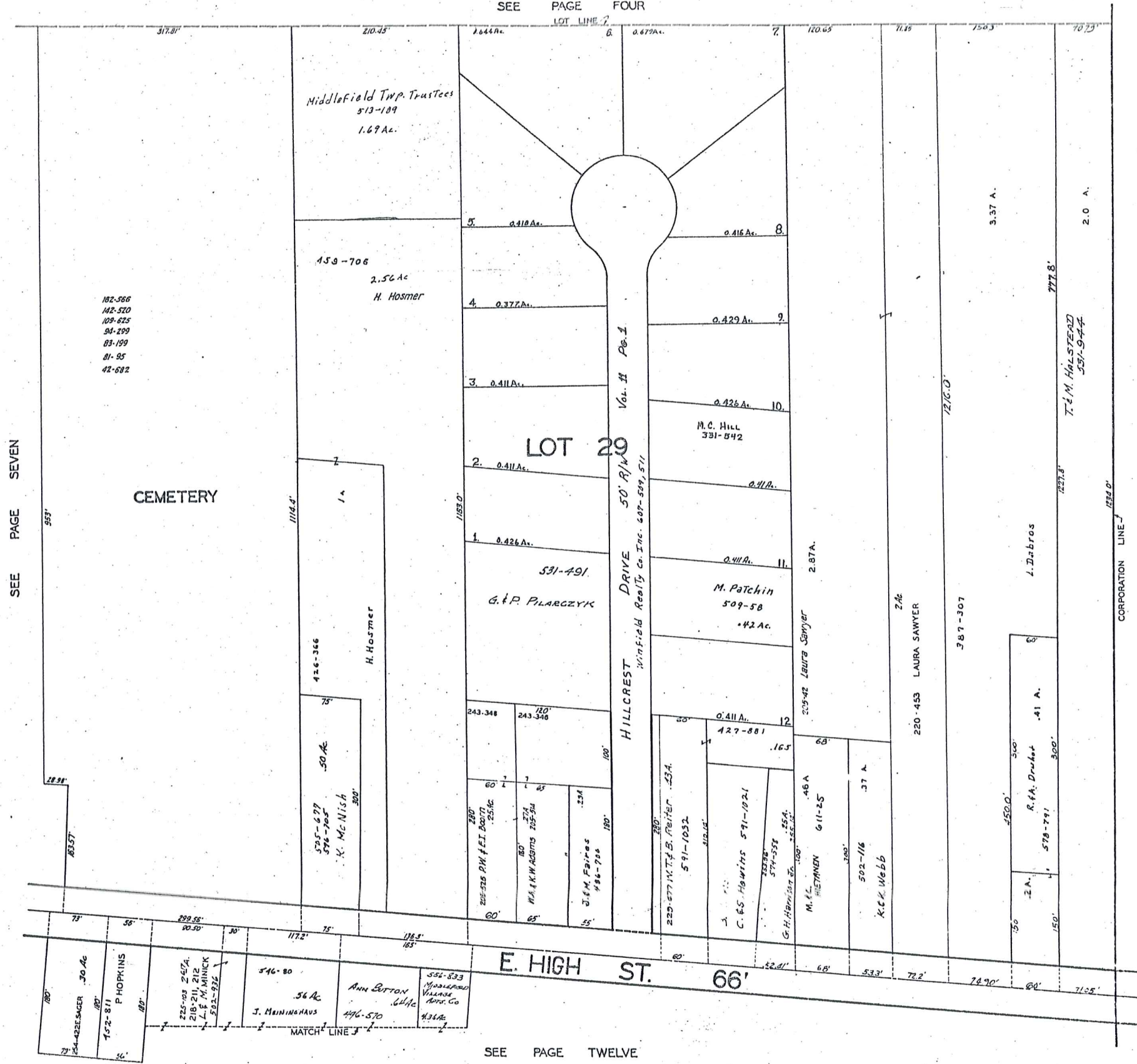
JAN 1, 1973

277

SEE PAGE ELEVEN

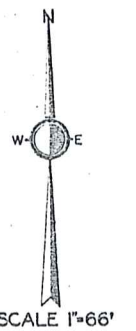
MIDDLEFIELD VILLAGE

SEE PAGE FOUR

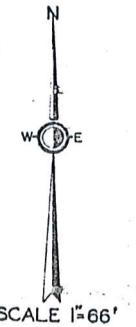
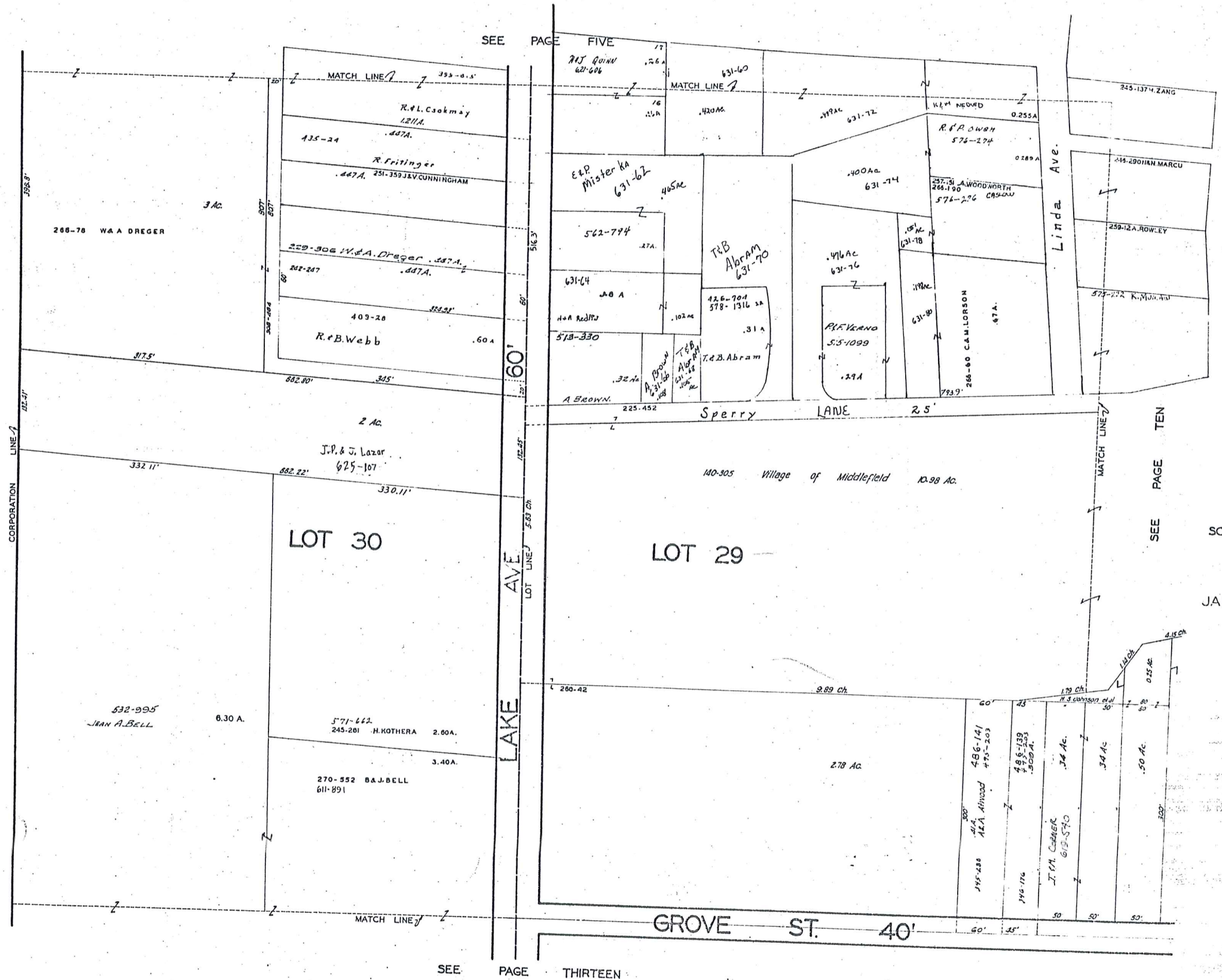


SEE PAGE SEVEN

SEE PAGE TWELVE



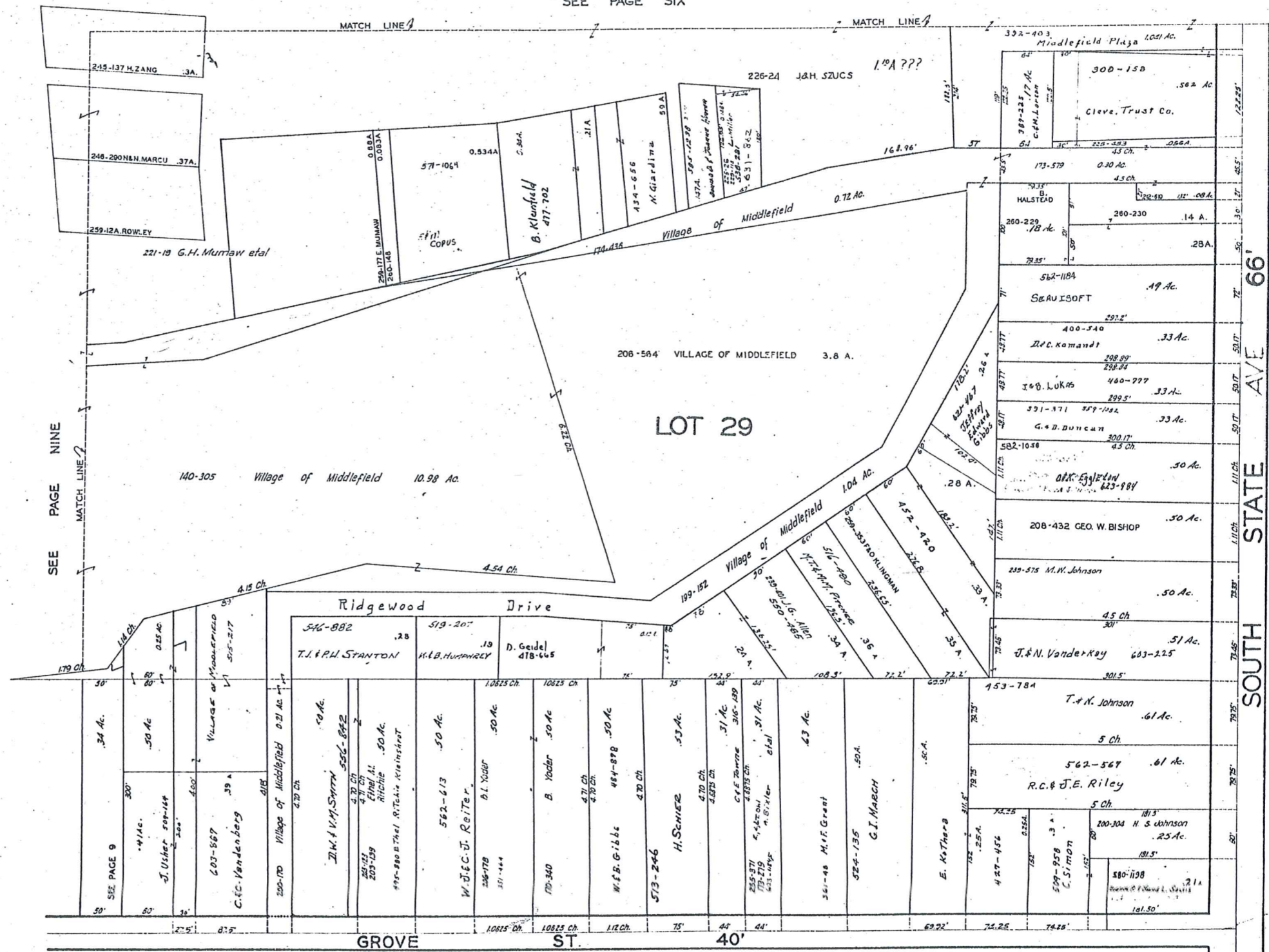
JAN 1, 1978



JAN 1, 1978

MIDDLEFIELD VILLAGE

SEE PAGE SIX

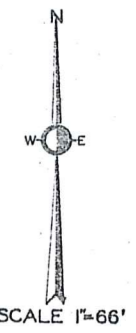


SEE PAGE NINE

SOUTH STATE AVE 66'

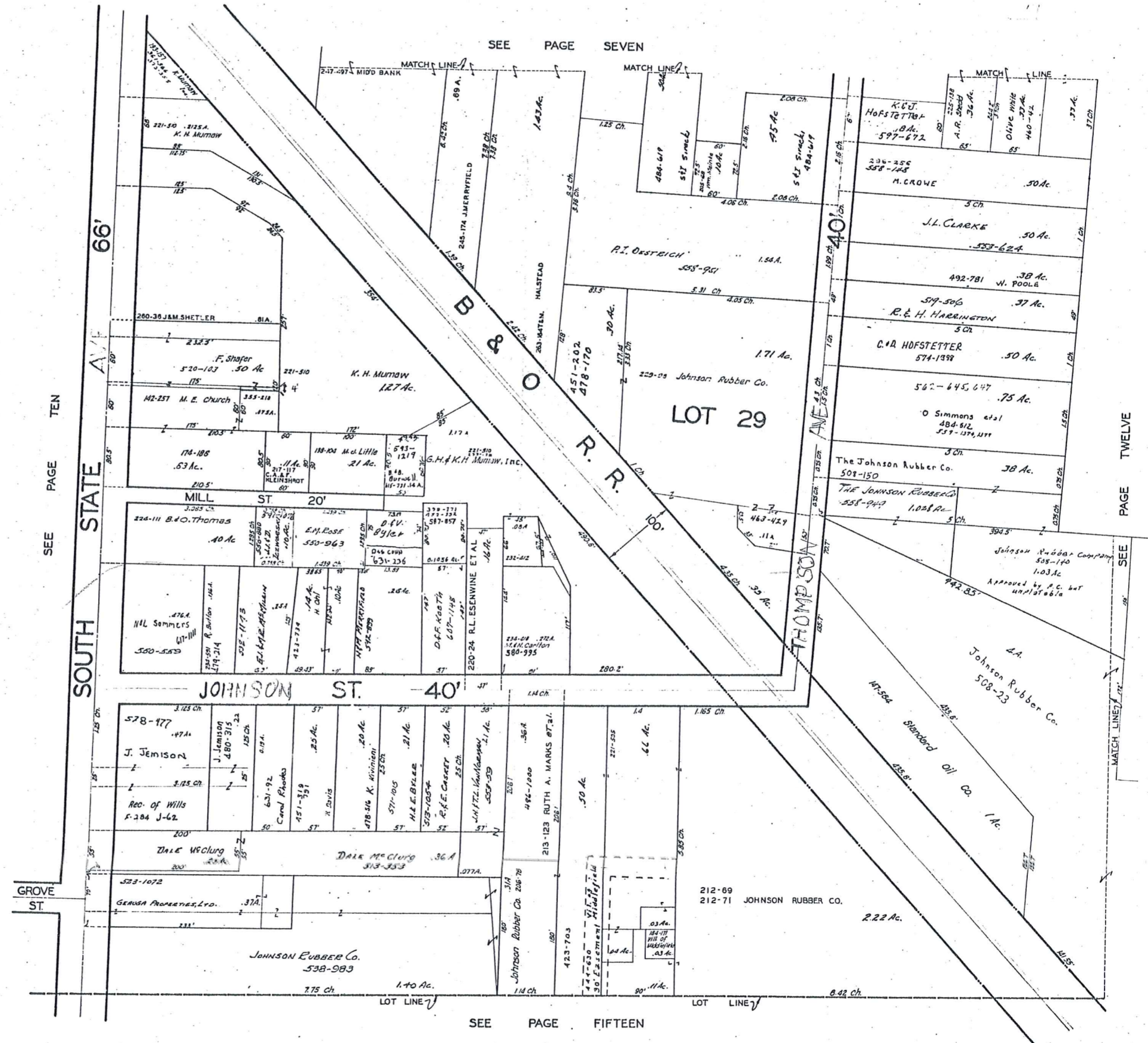
SEE PAGE ELEVEN

SEE PAGE FOURTEEN



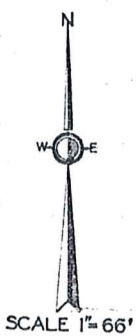
JAN. 1, 1978

MIDDLEFIELD VILLAGE



SEE PAGE TEN

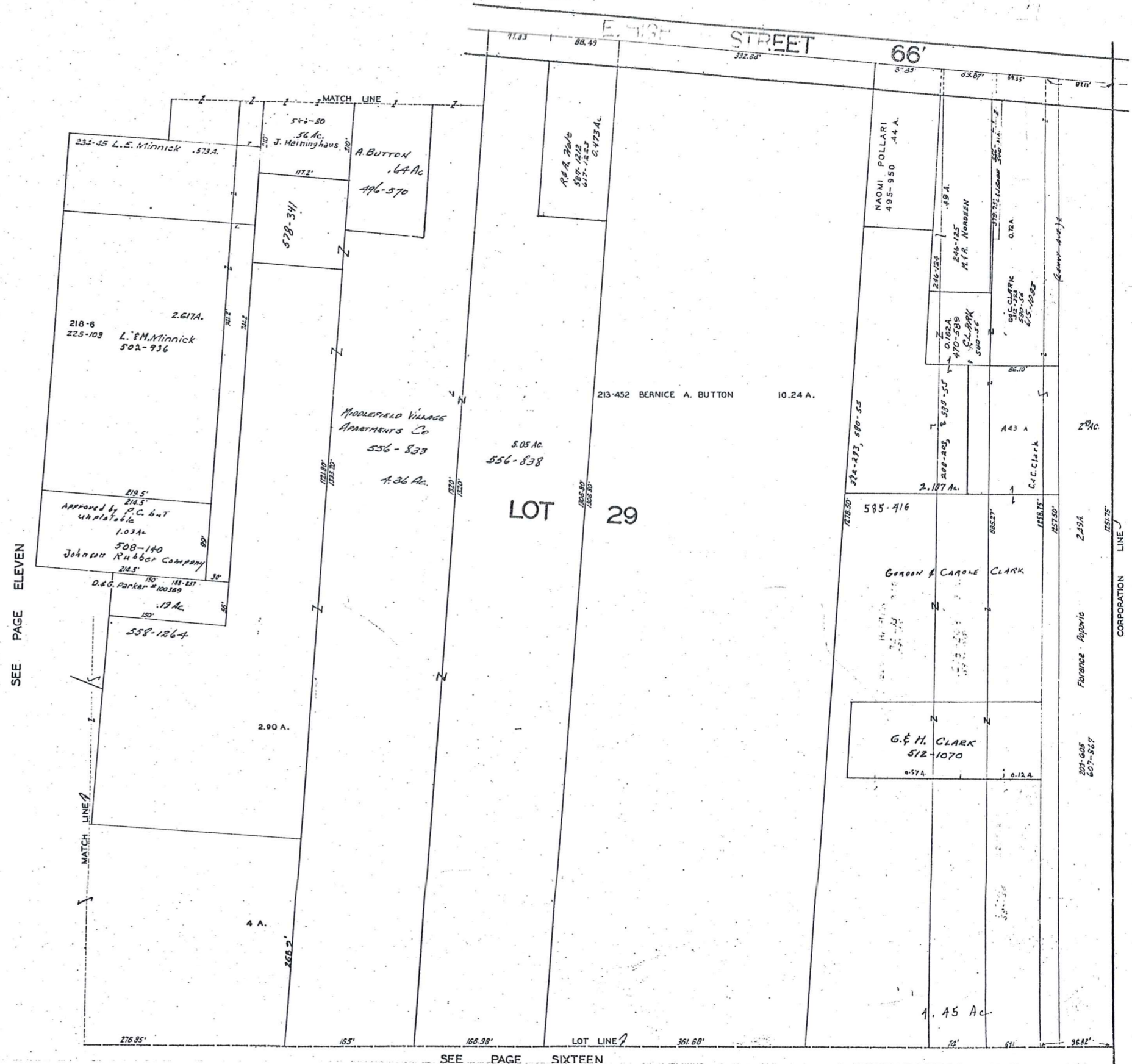
SEE PAGE TWELVE



JAN. 1, 1978

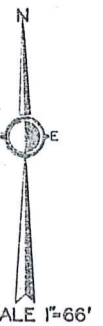
MIDDLEFIELD VILLAGE

SEE PAGE EIGHT



SEE PAGE ELEVEN

SEE PAGE SIXTEEN



SCALE 1"=66'

JAN. 1, 1973

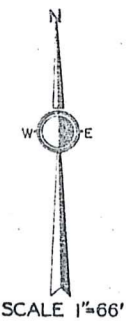
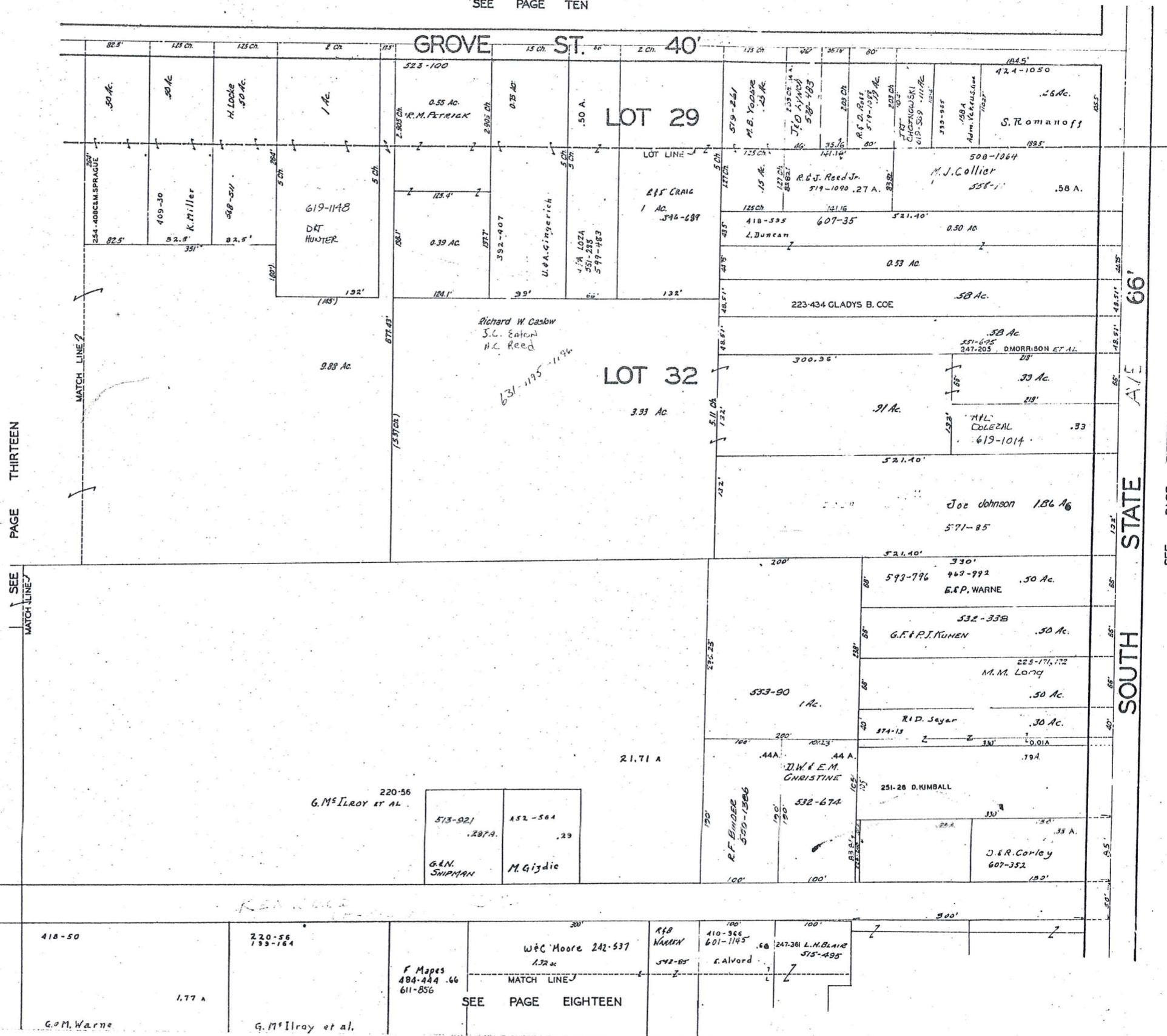
282

MIDDLEFIELD VILLAGE PG. 12

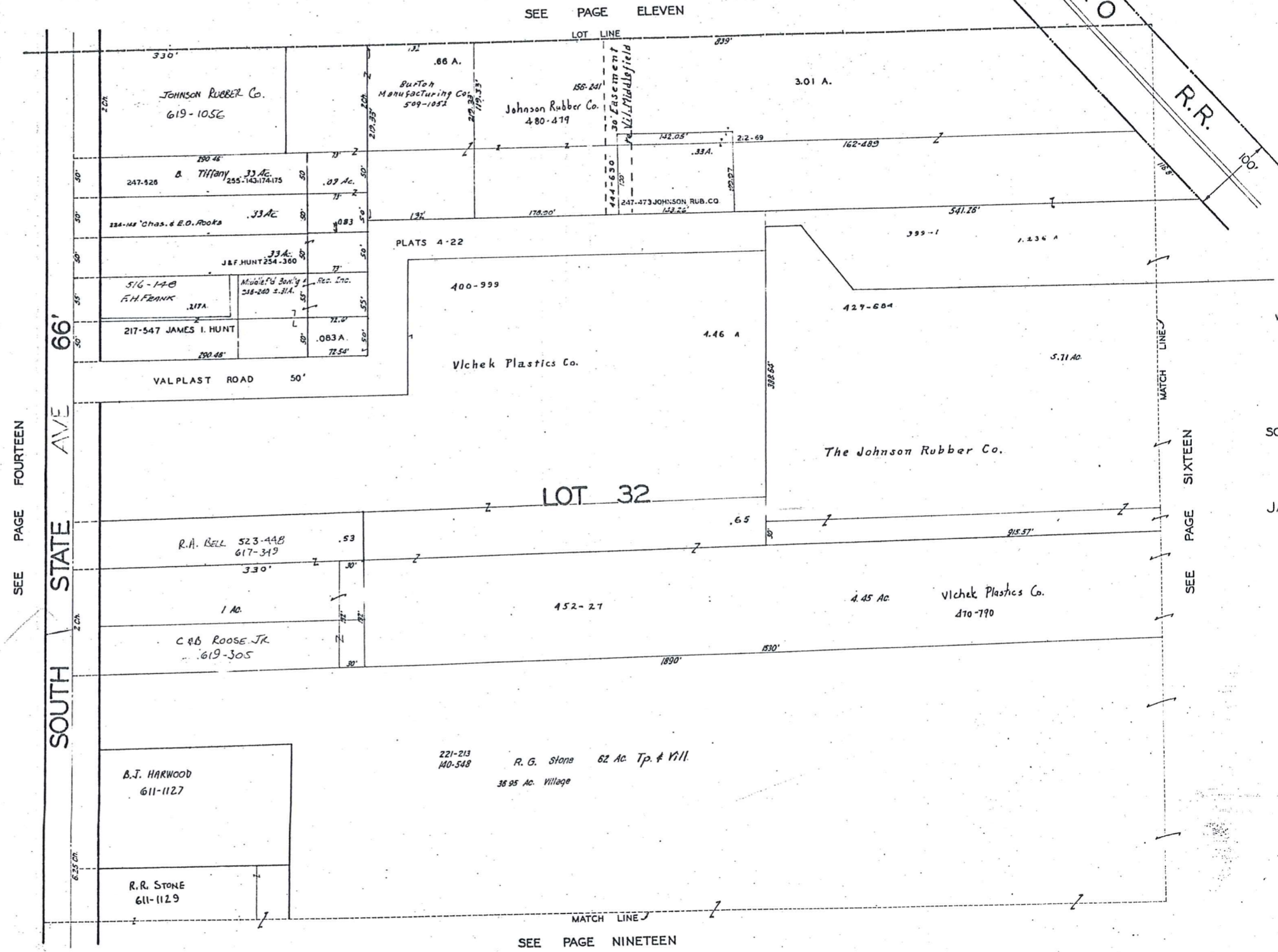


MIDDLEFIELD VILLAGE

SEE PAGE TEN



JAN 1, 1975



SCALE 1"=66'

JAN. 1, 1978

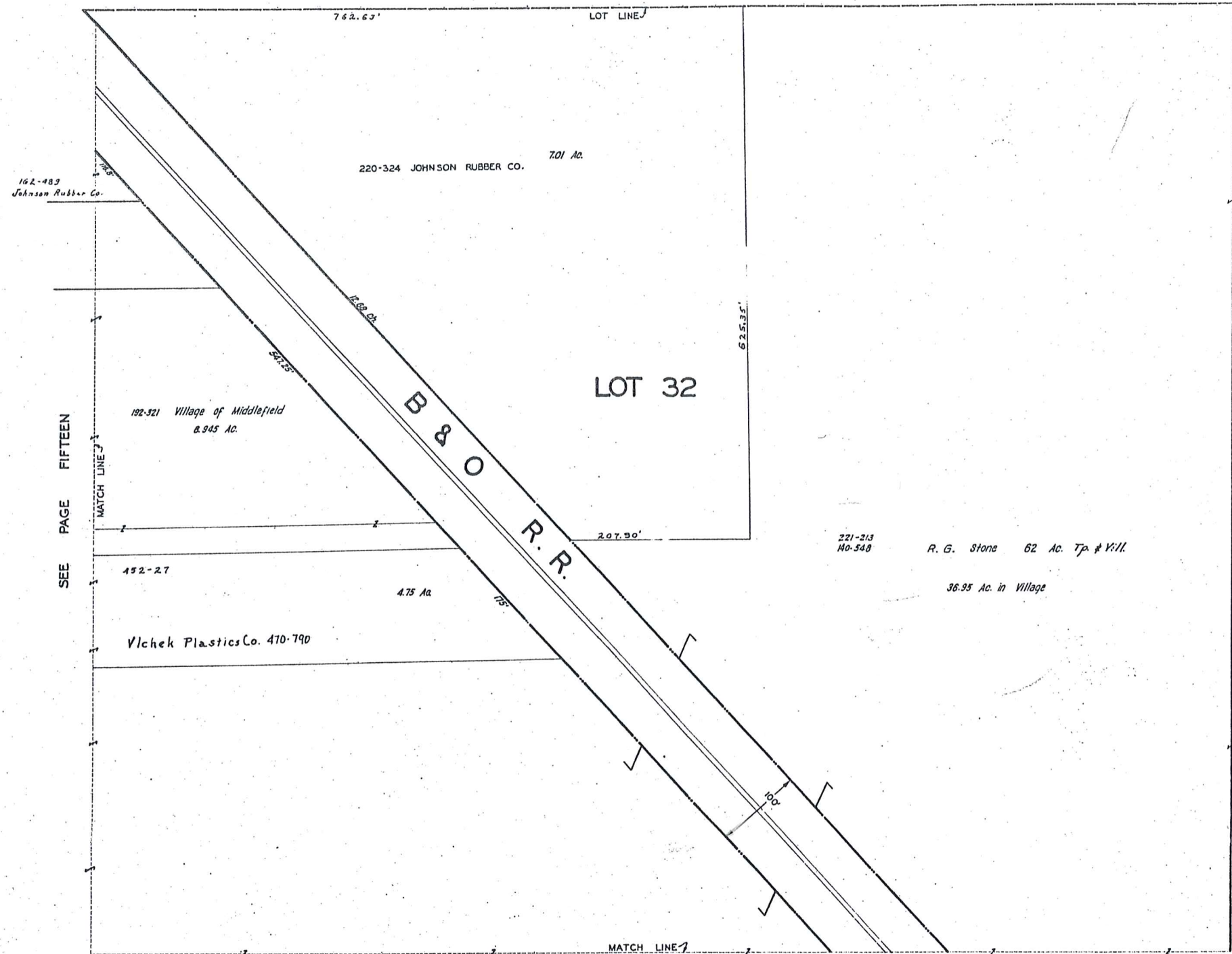
SEE PAGE FOURTEEN

SOUTH STATE AVE 66'

SEE PAGE SIXTEEN

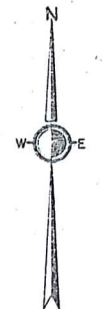
SEE PAGE NINETEEN

SEE PAGE TWELVE



SEE PAGE FIFTEEN

SEE PAGE TWENTY



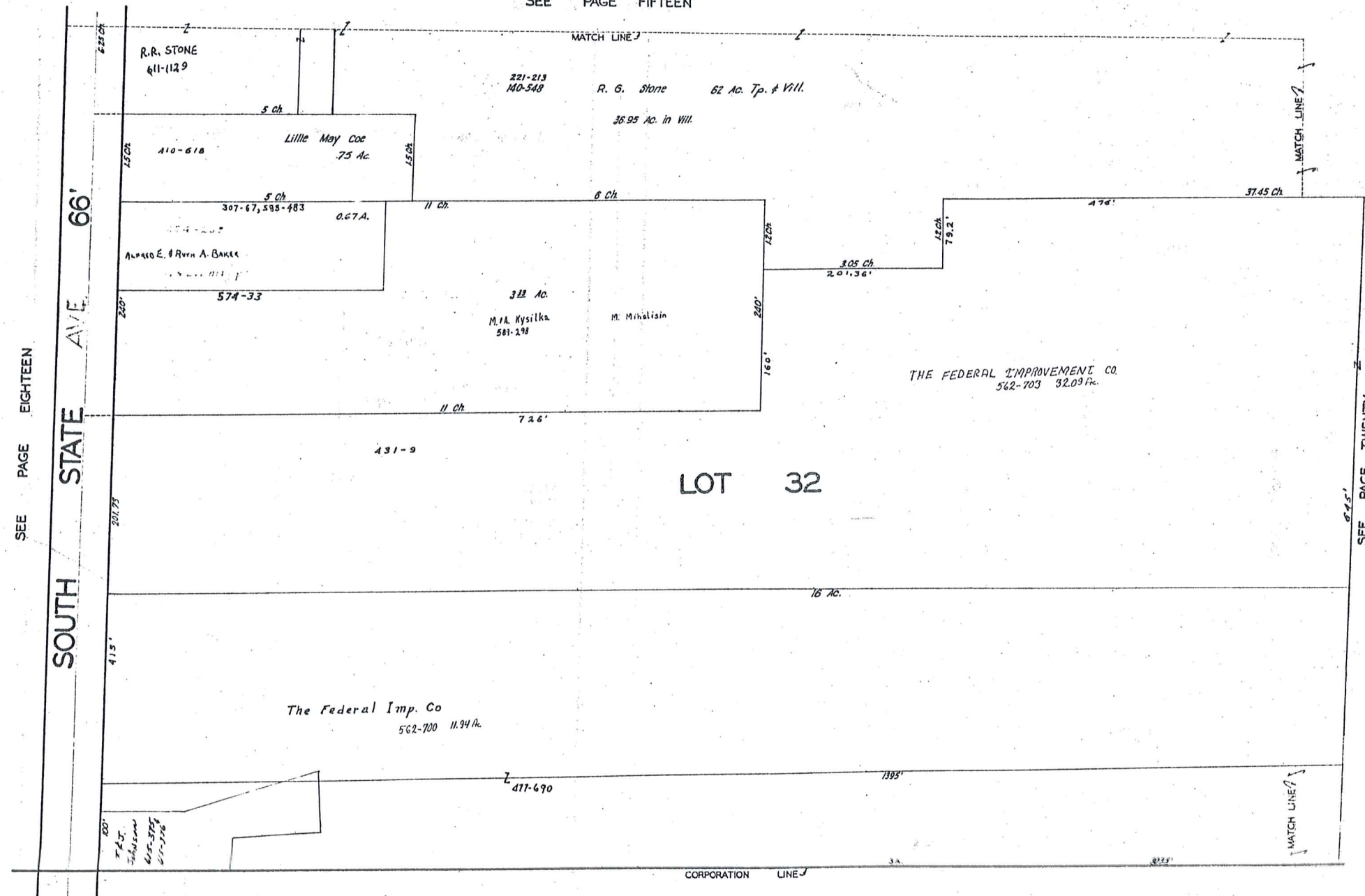
SCALE 1"=66'

JAN 1, 1978





SEE PAGE FIFTEEN



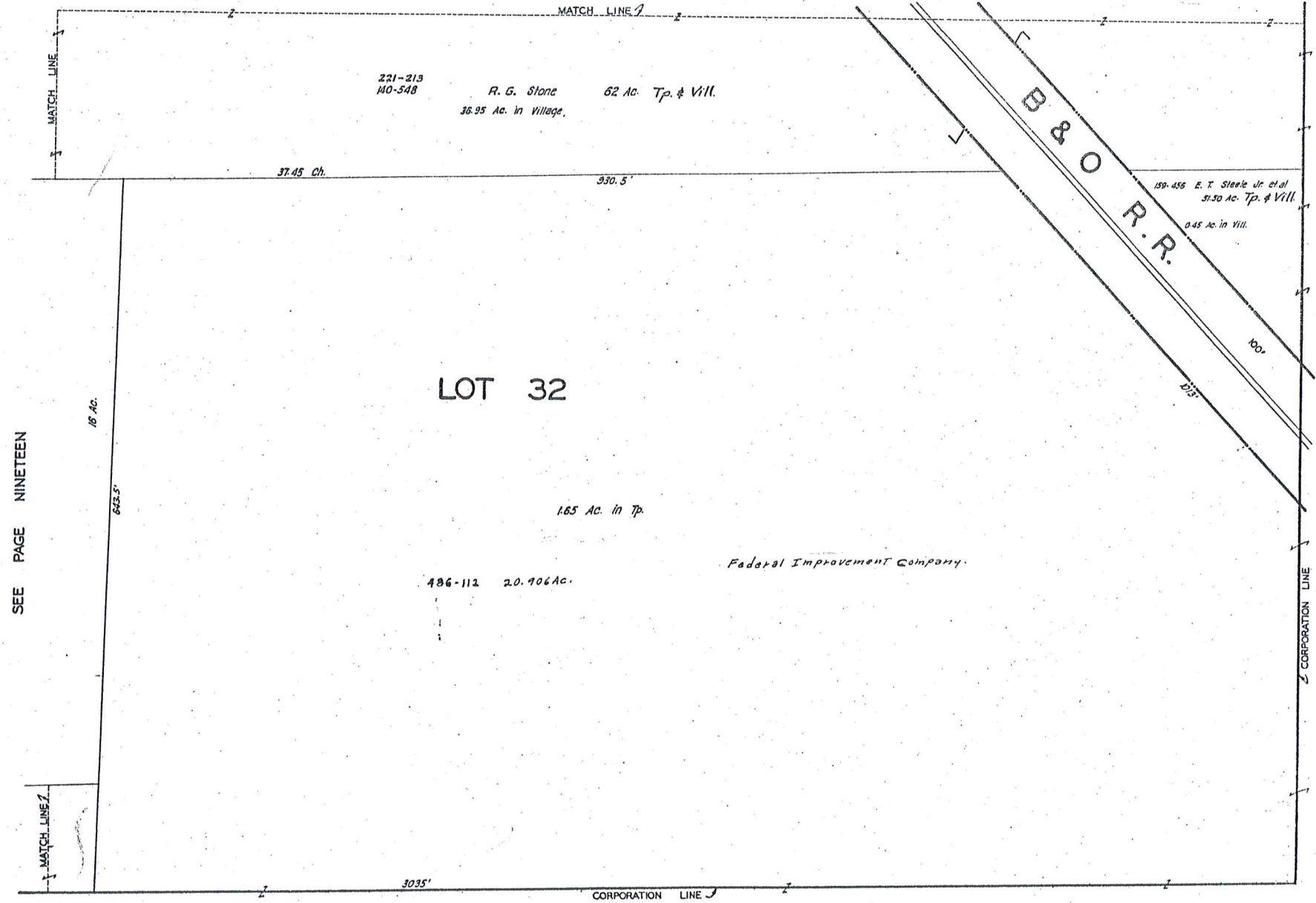
SCALE 1"=66'

JAN 1, 1978

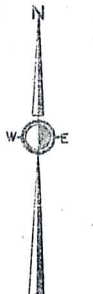
SEE PAGE EIGHTEEN

SEE PAGE TWENTY

SEE PAGE SIXTEEN



SEE PAGE NINETEEN



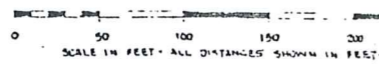
SCALE 1"=66'

JAN .1 , 1978

PLAT OF  
M. & B. SUBDIVISION  
IN  
LOT NO. 22 & LOT NO. 29  
MIDDLEFIELD VILLAGE  
GEAUGA COUNTY OHIO

SCALE: 1 IN. = 50 FT.

IRON MONUMENTS LOCATED AT POINTS MARKED (+)



I hereby certify that this plat is a true and correct representation of the premises shown and was made by me at the instance of M & B Developers Inc.

T. R. Root Registered Surveyor 28883  
CHARLETT, OHIO, June 5, 1973

Total area of Subdiv. 4.893 Ac  
Total area of dedicated streets 1.179 Ac  
Total length of dedicated streets 1079.5 Ft

M. & B. DEVELOPERS, INC. an Ohio corporation owns all the area shown for street shown hereon, claiming title by or through instrument recorded in volume 172, page 227 of Geauga County records and hereby accepts and dedicates this plat and certifies that the same was prepared at its order and request. Said Corporation hereby dedicates to public use for highway purposes the area within the boundaries of Standish Avenue and certifies that said area is free of all encumbrances. Said Corporation now requests acceptance of this dedication and subdivision by Middlefield Village and that this Plat then be placed upon the records of Geauga County.

In witness whereof, said Corporation sets its hand and Corporate seal at Ohio this \_\_\_\_\_ day of \_\_\_\_\_, 1973.

Witness \_\_\_\_\_ by \_\_\_\_\_ its \_\_\_\_\_  
Witness \_\_\_\_\_ by \_\_\_\_\_ its \_\_\_\_\_

State of Ohio ss. Before me a Notary Public in and for said County, and State, personally appeared the above named M & B Developers, Inc. and \_\_\_\_\_ its \_\_\_\_\_ and \_\_\_\_\_ who acknowledged that they did sign the foregoing instrument, and that the same is the free act and deed of said Corporation and the free act and deed of each of them personally and in such offices as their names are of. I have hereunto set my hand and official seal at \_\_\_\_\_ Ohio this \_\_\_\_\_ day of \_\_\_\_\_, 1973.

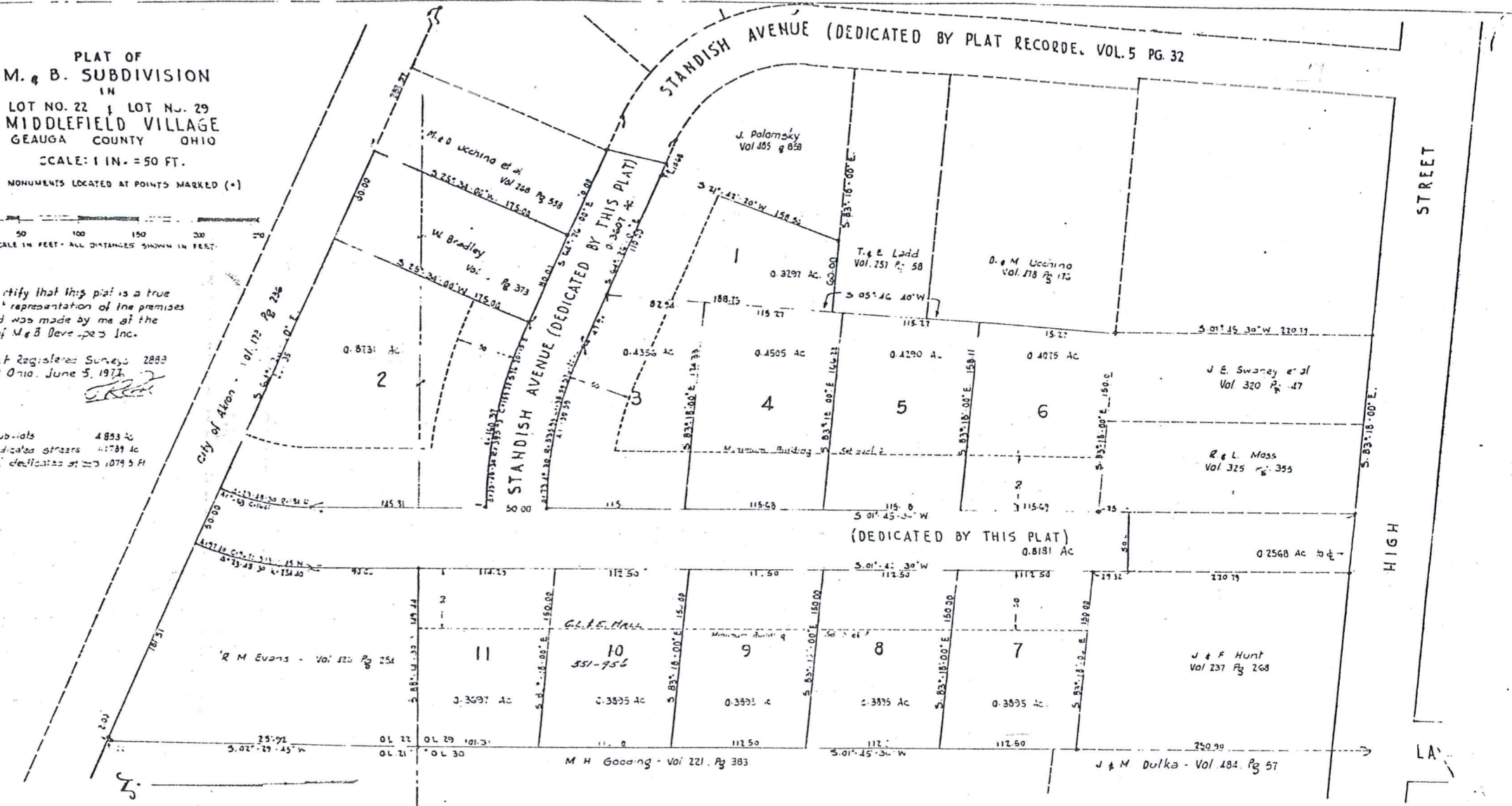
Notary Public

STANDISH AVENUE (DEDICATED BY PLAT RECORDED VOL. 5 PG. 32)

STREET

HIGH

LA



FOR MIDDLEFIELD VILLAGE

Acceptance recommended \_\_\_\_\_  
Date \_\_\_\_\_ for \_\_\_\_\_  
Acceptance recommended \_\_\_\_\_  
Date Jan 24, 1973 for Village Engineer  
Acceptance recommended \_\_\_\_\_  
Date \_\_\_\_\_ for \_\_\_\_\_

The subdivision of land as shown on this Plat is accepted on behalf of Middlefield Village, and the area dedicated to public use is hereby accepted as shown on this Vol. 5 pg. 32.

Mayor

Council President

Clerk

Attest: \_\_\_\_\_  
by Ord. #481 adopted \_\_\_\_\_ 1973

FOR GEAUGA COUNTY

Entered for transfer \_\_\_\_\_ 1973  
Transfered \_\_\_\_\_ 1973

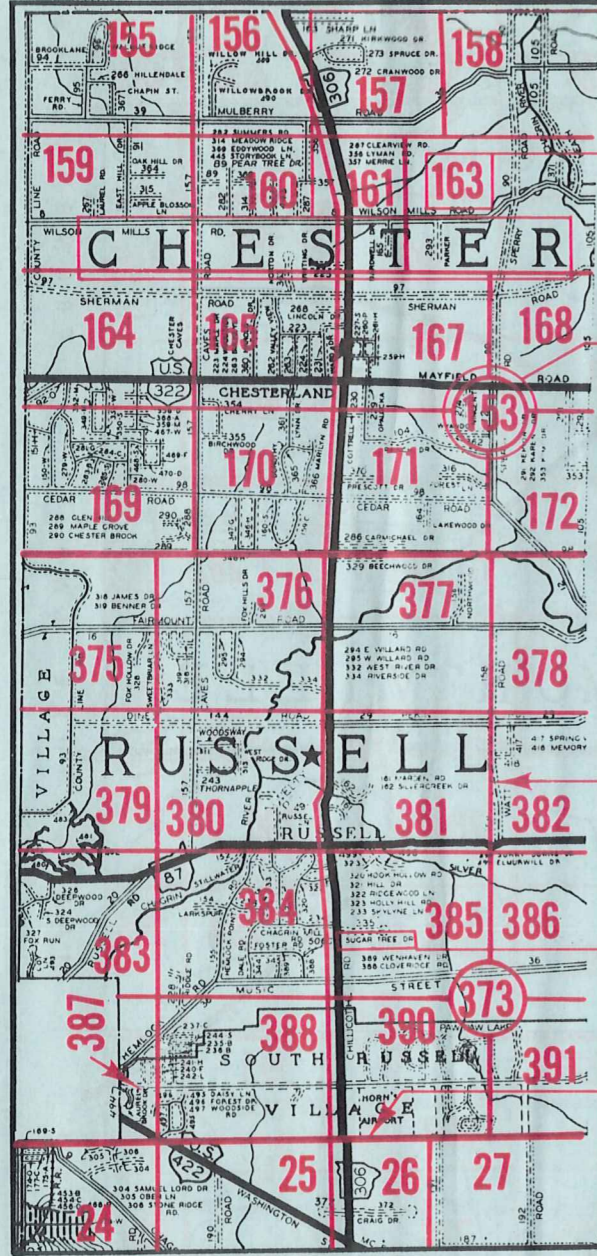
Auditor of Geauga County

Filed for Record \_\_\_\_\_ 1973  
Recorded \_\_\_\_\_ Page \_\_\_\_\_  
Gauga County Plat Records

Recorder of Geauga County

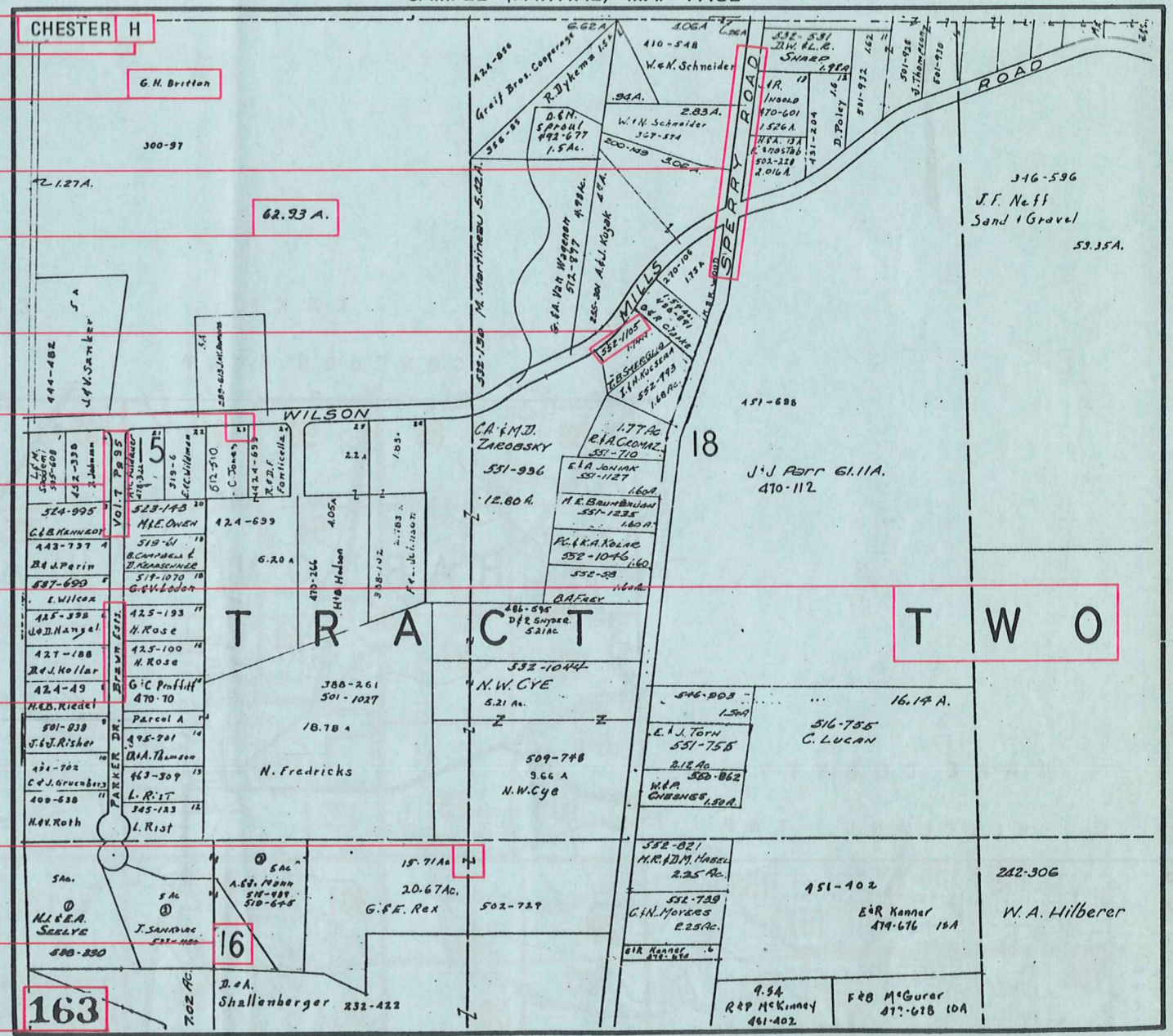
# Explanation and Use Sheet for Geauga County, Ohio

SAMPLE (PARTIAL) COUNTY INDEX MAP



- Township Name
- Map Page Number (Or Letter)
- Owners Name
- Street Name
- Acreage
- Municipality Index Beginning Atlas Page Number
- Deed Book & Page
- Subdivision Lot Number
- Plat Book & Page
- Tract Number
- Atlas Page Boundary
- Subdivision Name
- Street Name
- Denotes Continuous Ownership
- Municipality Index Atlas Page Boundary
- Tract Lot Number
- Atlas Page Number

SAMPLE (PARTIAL) MAP PAGE



## USE OF THE MAP VOLUME

1. LOCATE THE GENERAL AREA OF INTEREST ON THE COUNTY INDEX MAP, ATLAS PAGE 'B'.
2. A. IF PROPERTY IS IN A TOWNSHIP, NOTE THE ATLAS PAGE NUMBER. TURN TO THE PAGE INDICATED AND LOCATE SPECIFIC PARCEL OF INTEREST.  
NOTE: ON SOME MAPS YOU MAY BE REFERRED TO A DETAIL SHEET SHOWING AN ENLARGEMENT OF THE AREA. THESE MAPS ARE FOUND AT THE END OF THE REGULAR MAP PAGES IN EACH TOWNSHIP EITHER IN ALPHABETICAL OR NUMERICAL SEQUENCE.
- B. IF PROPERTY IS IN A MUNICIPALITY, REFER TO THE TABLE OF CONTENTS, ATLAS PAGE 'C', AND NOTE THE BEGINNING ATLAS PAGE NUMBER FOR THE MUNICIPALITY OF INTEREST.
  - (1) TURN TO THE PAGE INDICATED. ON THIS PAGE WILL APPEAR AN INDEX MAP FOR THAT MUNICIPALITY.
  - (2) LOCATE SPECIFIC AREA OF INTEREST AND NOTE THE MAP PAGE NUMBER.  
NOTE: DO NOT CONFUSE THE MAP PAGE NUMBER WITH THE ATLAS PAGE NUMBER IN THESE MUNICIPALITIES.
  - (3) FOLLOW EITHER ALPHABETICAL OR NUMERICAL SEQUENCE TO THE MAP PAGE INDICATED AND LOCATE SPECIFIC PARCEL OF INTEREST.